

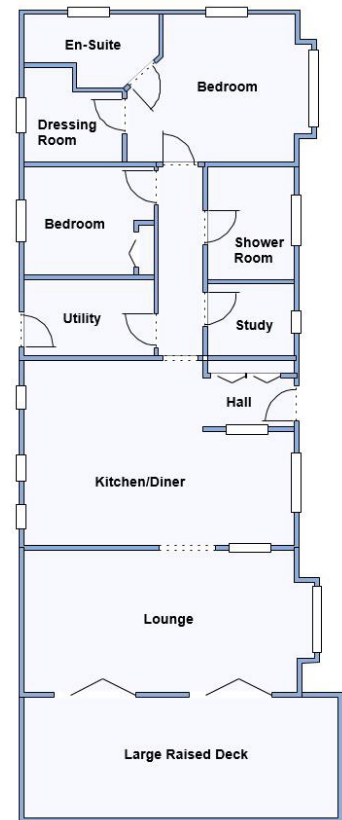
Head Office:
 Dixon Kelley Estate Agents
 1 Penn Court
 Station Road, West Moors
 Dorset. BH22 0JJ

DORSET PARK HOMES

DRAFT
www.dorsetparkhomes.com

Telephone: 01202 877511

**25 Juniper Way, Deer's Court, Three Legged Cross,
 Wimborne. BH21 6FH**



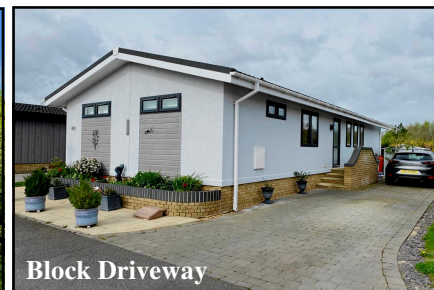
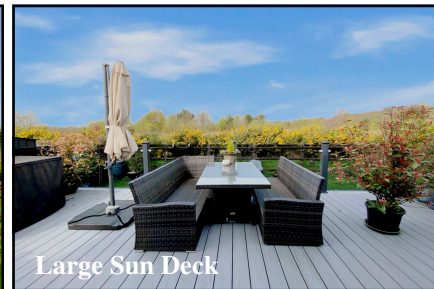
This drawing has been prepared for diagrammatic purpose only. Not to scale.

2-Bedroom Park Home - approx 50' x 22'

Accommodation & approximate room dimensions:

- **Entrance Hall:** Double cloaks cupboard.
- **Kitchen/Diner:** approx 20'2" x 13'4" max. A stunning room with a superb range of floor and wall cupboards. Built-in double oven, microwave, hob, & cooker hood. Integrated fridge/freezer, Wine chiller & dishwasher. Ample space for dining suite.
- **Lounge:** approx 21'2" x 10'3". 2 sets of bi-fold doors to large Deck. Feature fireplace.
- **Study:** Fitted desk top.
- **Utility Room:** approx 9'3" x 5'7". Integrated washing machine & tumble dryer. Boiler cupboard.
- **Bedroom 1:** approx 12'7" x 10'8" max.
- **Large Dressing Room:** Fitted shelves & hanging rails
- **Luxury En-Suite Shower Room**
- **Bedroom 2:** approx 9'3" x 7'9". Fitted wardrobe.
- **Luxury Shower Room**
- **Gas Central Heating & PVCu Double-Glazing**
- **Quality Fixtures & Fittings Throughout**
- **Stylish Interior Design & Vaulted Ceilings**
- **Large Sun Deck & Delightful Private Garden**
- **Driveway for 2 cars**
- **Age Restriction 45+ Pets Considered**

Delightful Outside Space



Price: £299,950

Pitch Fee: approx £289.72 per month

Subject to Annual Review

Council Tax Band: 'A'

Tenure: 1983 Mobile Homes Act Agreement

VIEWING STRICTLY BY APPOINTMENT WITH THE VENDOR'S AGENT Dorset Park Homes 01202 877511

IMPORTANT NOTE: These particulars are believed to be correct but their accuracy is not guaranteed. They do not form part of any contract. Nothing in these particulars shall be deemed to be a statement that the property is in good structural condition or otherwise, nor that any of the services, appliances, equipment or facilities are in good working order or have been tested. Purchasers should satisfy themselves on such matters prior to purchase Ref.W04753

The recommended specialist in Park Home sales
 Partner: Simon Dixon





Large Lounge



Lounge with doors to Sun Deck



Superb Kitchen/Diner



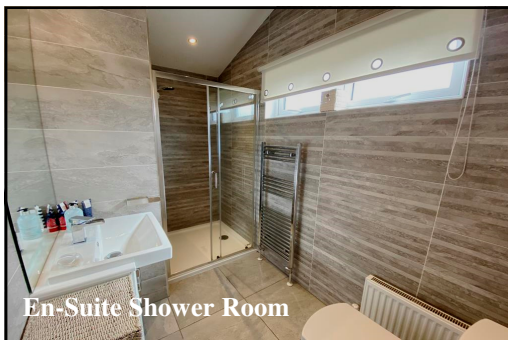
Luxury Shower Room



Dining Area



Bedroom 1



En-Suite Shower Room



Bedroom 2



Quality Kitchen/Diner with integrated appliances

Stately Albion 'Kensington' Park Home approx 50' x 22' Manufactured 2019 Stylish interior with high quality fixtures & fittings throughout, vaulted ceilings, fitted blinds & LED lighting. Large Deck & Private Garden with delightful heathland views

Newly developed 'Gated' Residential Park set in 34 acres of private countryside park. Short drive to Wimborne, Ferndown & Ringwood.